



# FlexEnterprise LEO

High-throughput, Low-latency, SLA-backed Enterprise Satellite Connectivity



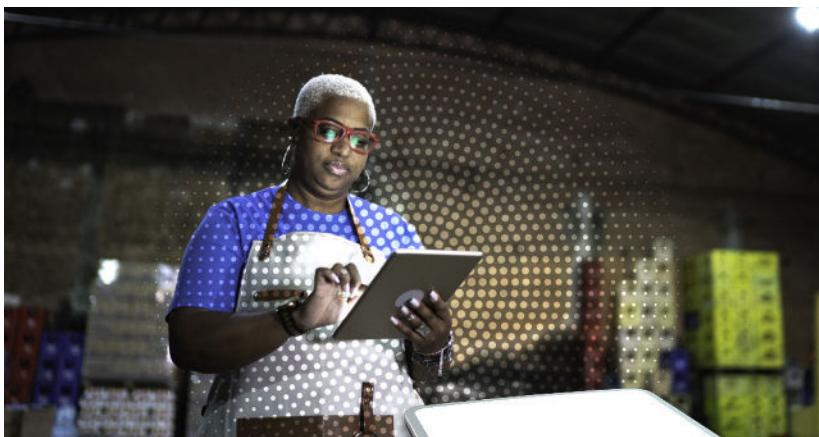
## Low-Earth Orbit (LEO) Options for Reliable Non-terrestrial Connectivity Service

With a combination of quality connectivity and business-grade value-added services and support, IntelSat FlexEnterprise LEO delivers the satellite networking solution that enables service providers to extend their network reach while maintaining their reputation for enterprise-grade solutions.

FlexEnterprise LEO provides the flexibility to address use cases such as:

- Primary office and remote-site connectivity for organizations across segments like retail, banking, mining, utilities, and domestic & international government
- Non-terrestrial underlay network for SD-WAN deployments
- Reliable enterprise network backup

Whether you need simply to fill a service gap, are looking for comprehensive design support, or require reliable ongoing support, to integrate satellite benefits into your offerings, FlexEnterprise LEO using the OneWeb LEO constellation enables you to deliver quality connectivity.



Hughes 1100  
24 in x 16 in

## Advantages of FlexEnterprise LEO from IntelSat



### Service

Meet customer expectations for value-added services and support



### Reliability

Add connectivity and resiliency to primary and remote locations



### Geography

Expand your footprint and reduce time to deploy new sites



### Performance

Satellite link latency as low as 70ms to meet application performance expectations



### Simplicity

Pre-packaged end-terminal and subscription plans delivered via easy-to-install flat-panel antennas

## Why Choose Intelsat for LEO Services?

FlexEnterprise LEO delivers benefits beyond satellite connectivity alone, focusing on the business and operational needs of telcos and global or regional enterprise-focused service providers:



INTELSAT

Other LEO Offerings

Availability & Throughput SLAs	✓	-
Unified Customer Portal (SMP)	✓	-
Carrier OSS/BSS Integration	✓	-
Private-network Traffic Handoff	✓	-
Warehousing & Logistics	✓	-
24x365 NOC	✓	-

## Order Up Global Connectivity

With minimal capital costs and capacity commitments, Intelsat's array of satellite-as-a-service options enables you to quickly deploy new sites and add resiliency to established sites across a global footprint. You'll easily harness the reach and reliability of FlexEnterprise connectivity to expand your network to where your users need it.

## Deliver More to Your Users

The FlexEnterprise portfolio, including solutions leveraging both LEO and GEO (geostationary orbit) connectivity, helps you streamline operations and deployment processes thanks to simple end-terminal subscription plans, uniform performance across the global FlexEnterprise GEO and LEO footprints, and enterprise-grade support. It's now easier than ever to make your network nimble and scalable, delivering a new level of reach, performance, and flexibility to support critical applications and drive business productivity.



Hughes 1120  
24 in x 33in

## About Intelsat

Intelsat's global team of professionals is focused on providing seamless and secure, satellite-based communications to government, NGO and commercial customers through the company's next-generation global network and managed services. Bridging the digital divide by operating one of the world's largest and most advanced satellite fleet and connectivity infrastructures, Intelsat enables people and their tools to speak over oceans, see across continents and listen through the skies to communicate, cooperate and coexist. Since its founding six decades ago, the company has been synonymous with satellite-industry "firsts" in service to its customers and the planet. Leaning on a legacy of innovation and focusing on addressing a new generation of challenges, Intelsat team members now have our sights on the "next firsts" in space as we disrupt the field and lead in the digital transformation of the industry.

## Contact Sales

### Africa

+27 11-535-4700  
sales.africa@intelsat.com

### Asia-Pacific

+65 6572-5450  
sales.asiapacific@intelsat.com

### Europe

+44 20-3036-6700  
sales.europe@intelsat.com

### Latin America & Caribbean

+1 305-445-5536  
sales.lac@intelsat.com

### Middle East & North Africa

+971 4-390-1515  
sales.mena@intelsat.com

### North America

+1 703-559-6800  
sales.na@intelsat.com

