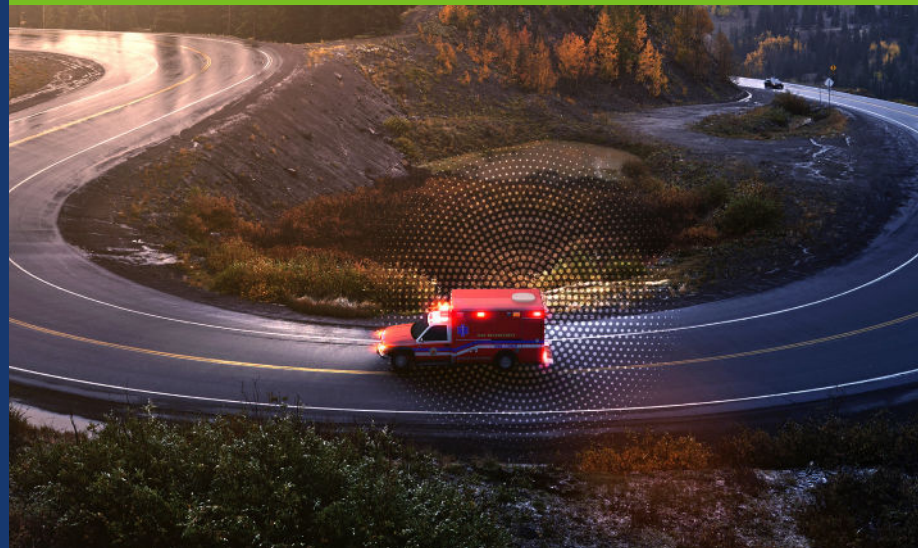




FlexMove LEO

Low-Earth orbit high-speed,
low-latency satellite connectivity
for COTM and COTP anywhere



Low-Earth Orbit (LEO) Connectivity Solution for Advanced COTM and COTP Communications

As part of IntelSat's FlexMove portfolio of services, and through our partnership with Eutelsat OneWeb, IntelSat offers FlexMove LEO for critical applications requiring the high-speed and low-latency connectivity of a low-Earth orbit network.

With a FlexMove LEO managed service for Comms-on-the-Move (COTM) and Comms-on-the-Pause (COTP), emergency responders, government and law enforcement agencies, and non-governmental organizations gain the added benefit of low-Earth orbit business-grade connectivity ensuring reliable, real-time communications whenever and wherever needed.

The Best of Both Worlds

In one place (GEO and LEO)



Advantages of OneWeb LEO Network Service from IntelSat



Service

IntelSat managed LEO service with 24x7/365 personal support



High Speed

Up to 100 Mbps download and 20 Mbps upload



Low Latency

~70 milliseconds for faster response times of applications



Business Centered

Designed for business and missions on the move

Advanced Low-Earth Orbit Ku-band Satellite Terminals

Cutting-edge technology. Robust connectivity. Easy deployment.

Intellian OW10HL Compact Terminal

Intellian's compact flat panel is ideal for a variety of communications-on-the-pause (COTP) applications.

- **Dimensions:** 56 cm x 45 cm x 12 cm / 22 in. x 17.8 in. x 4.7 in. plus CNX-WiFi 21 cm x 17 cm x 8 cm / 8.2 in. x 6.7 in. x 3.1 in.
- **Weight:** Terminal 12.2 kg / 26.9 lb. plus adjustable mount adapter 1.5 kg / 3 lb. plus CNX-WiFi 0.6 kg / 1.3 lb.
- **Operating Temperature:** -40° to +55°C / -40° to 131°F for terminals, CNX units at 0° to 40°C / 32-104°F
- **Ingress Protection:** Terminals are IP66. CNX units are not weatherized. CNX-WiFi is IP44 rated.



Kymeta Hawk u8 LEO

Kymeta's electronically scanning terminal designed to provide reliable connectivity with moving satellites. Full duplex, single aperture, Ku-band flat-panel antenna, electronically steered holographic beam-forming array.

- **Dimensions:** 89.5 cm x 89.5 cm x 14 cm / 35.2 in. x 35.2 in. x 5.5 in.
- **Weight:** 30.1 kg / 66 lb.
- **Operating Temperature:** -40 °C to +55 °C
- **Ingress Protection:** IP66



Offered Exclusively Through Intelsat's Solutions Partners

Offered through our carefully selected solutions partners, Intelsat offers a suite of advanced connectivity solutions for land mobility communications. Contact your service provider today and ask about our FlexMove solutions to meet your unique business needs.

Powered by Enterprise-grade Satellite Network Service

As the foundational architects of satellite technology, designing global network solutions that fit specific user needs is in our DNA.

Learn more about how we can help with your connectivity needs at:

[Intelsat.com/flexmove](https://www.intelsat.com/flexmove)

About Intelsat

Intelsat's global team of professionals is focused on providing seamless and secure, satellite-based communications to government, NGO and commercial customers through the company's next-generation global network and managed services. Bridging the digital divide by operating one of the world's largest and most advanced satellite fleet and connectivity infrastructures, Intelsat enables people and their tools to speak over oceans, see across continents and listen through the skies to communicate, cooperate and coexist. Since its founding six decades ago, the company has been synonymous with satellite-industry "firsts" in service to its customers and the planet. Leaning on a legacy of innovation and focusing on addressing a new generation of challenges, Intelsat team members now have our sights on the "next firsts" in space as we disrupt the field and lead in the digital transformation of the industry.

Contact Sales

Africa

+27 11-535-4700
sales.africa@intelsat.com

Asia-Pacific

+65 6572-5450
sales.asiapacific@intelsat.com

Europe

+44 20-3036-6700
sales.europe@intelsat.com

Latin America & Caribbean

+1 305-445-5536
sales.lac@intelsat.com

Middle East & North Africa

+971 4-390-1515
sales.mena@intelsat.com

North America

+1 703-559-6800
sales.na@intelsat.com

