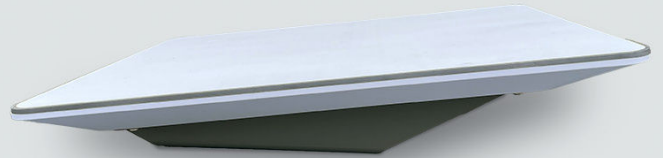


High-Performance Flat Panel Ku band Terminal



Enables Secure Single Orbit LEO Satellite Services for the US Government

This compact, high-performance LEO-capable antenna is designed for the exclusive use of the US government and military. Made in the USA, any team member can set up the low SWAP terminal in under 30 minutes, enabling secure low-latency communications on the pause or move (COTP/COTM). The antenna also has a low probability of detection and signal interception (LPD/LPI) and works in GPS-denied environments.

- Low latency communications-on-the-move and on-the-pause (COTM/COTP) anywhere
- Forward compatible terminal will work with future U.S. government LEO satellite networks
- Low probability of detection and interception with low SWAP, powered by a standard power outlet or optionally via a 12V accessory outlet
- Configure traffic to land in a U.S. teleport via inter-satellite links (OISLs)
- Stationary, portable, or mobile use
- Multiple terminal accessories available



Globally available, low latency, high throughput LEO satellite connectivity



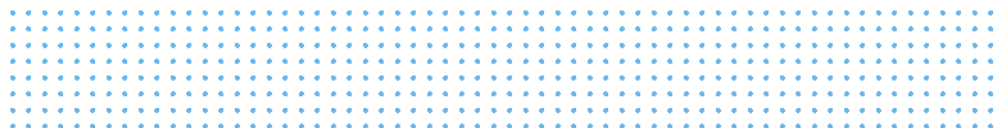
<250x20 Mbps downlink/uplink for latency-sensitive applications



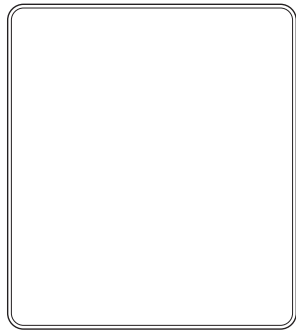
Secure data processing and hosting of national security payloads



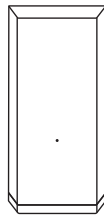
Proliferated LEO architecture provides constant connectivity



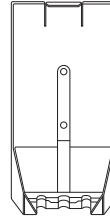
Intelsat's LEO Basic Kit comes in a single cardboard box that includes:



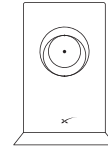
Antenna



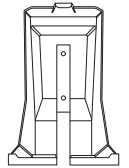
Power Supply



Power Supply Mount



Router



Router Mount



Antenna Cable
8 m
(26.2 ft)



Ethernet Cable
5 m
(16.5 ft)



Router Cable
2 m
(6.5 ft)



AC Cable (Power Supply)
1.8 m
(6 ft)



AC Cable (Router)
1.8 m
(6 ft)

*Setup Guide and 2-year manufacturer warranty included.

SPECIFICATIONS

ANTENNA TYPE

Electronic Phased Array

FIELD OF VIEW

140°
(Mount at 8° Angle for Rainfall)

ORIENTATION

Fixed

DISH WEIGHT

5.9 kg / 13 lbs without Cable
6.7 kg / 15 lbs with 8 m / 26.2 ft Cable

DIMENSIONS

(LxWxH): 575x511x41 mm /
22.6" x 20.1" x 1.6"

ENVIRONMENTAL RATING

IP56

OPERATIONAL TEMPERATURE

-30°C to 50°C (-22°F to 122°F)

WIND SPEED

Survivable: 280 kph+ (174 mph+)

SNOW MELT CAPABILITY

Up to 75 mm / hour (3 in / hour)

POWER CONSUMPTION

Average: 110-150 W

WI-FI

Dual Band Wi-Fi 5 - 3x3 MIMO

USER LAN

RJ45 Cable

ROUTER SECURITY

WPA2

ROUTER RANGE

Up to 185 m (2000 ft)
Varies on placement, interference,
and materials

POWER SPECIFICATIONS

100-240V - 6.3A 50 - 60 Hz

USER LAN

RJ45 Cable

ADDITIONAL ACCESSORIES

AC - Cable Wi-Fi Router
Ethernet Cable - 30m
Router Cable - 30m
8m Flat High Performance (FHP) Cable
25m Flat High Performance (FHP) Cable
Power Supply
Ethernet Adapter
Mesh Wi-Fi Router
Cable Routing Kit
Mason Routing Kit
Wedge Mount Kit
FHP Pipe Adapter
Ruggedized Terminal Case



To learn more about Intelsat's LEO-only satellite and multi-orbit solutions, visit intelsat.com and contact sales at gs-salesinquiries@intelsat.com