



Intelsat CellBackhaul

A Complete Fully Managed Mobile Backhaul Service for
Providing Network Coverage Wherever Needed in Europe



Quality Mobile Broadband in Rural Areas Is Possible

Regardless of where mobile users live, work or play throughout Europe, there are rural areas where 4G coverage remains spotty or non-existent. Why? Primarily because high cost and low ROI associated with using traditional terrestrial backhaul to connect cell sites in these areas has made it impractical for mobile operators; and in many cases topographical challenges have made it unfeasible.

But what if there was a way to quickly and cost-effectively backhaul mobile broadband coverage in all the places where it is needed, regardless of how rural, and do it without the hassle of managing that service, all while ensuring a high-quality end user experience?

More Coverage with Intelsat CellBackhaul

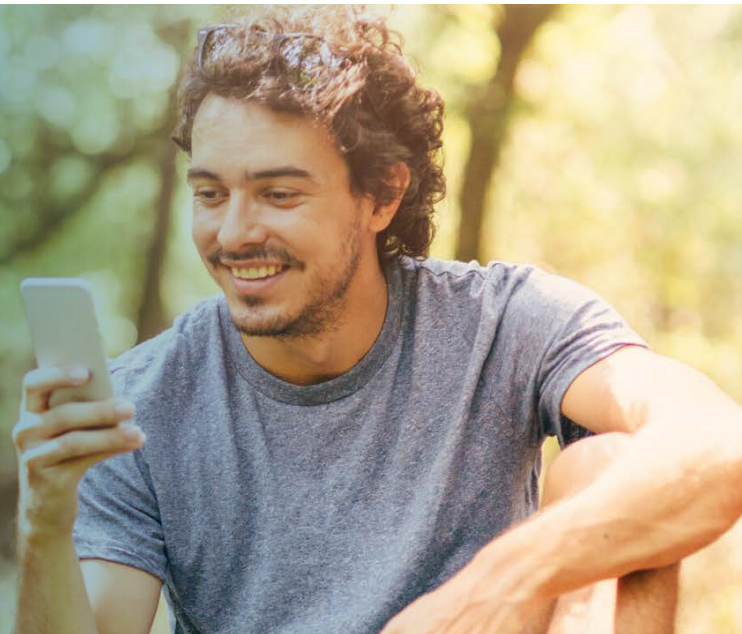
Intelsat CellBackhaul is a fully-managed, high-performing, end-to-end mobile backhaul service powered by Intelsat's secure and reliable worldwide network. It enables mobile operators (and even tower companies) to connect cell sites in any location, no matter how remote, providing high-quality mobile broadband coverage to rural communities, roads, tourist and recreation areas, farms, and any other place where connectivity is needed.

CellBackhaul takes the complexity out of mobile backhaul, all while ensuring fibre-like connectivity with a unique integrated solution to minimise jitter that leverages technologies such as forward error correction (FEC), TCP acceleration, and caching.

With Intelsat CellBackhaul, mobile operators can:

- ▣ Cover more unconnected land area
- ▣ Connect more rural and hard-to-reach areas with reliable, quality 4G and 5G
- ▣ Address regulator pressures and facilitate spectrum renewal negotiations
- ▣ Replace legacy low-bandwidth high-cost backhaul infrastructure
- ▣ Augment existing low-bandwidth infrastructure to support data services
- ▣ Decrease time to turn up new cell sites and start generating revenue sooner
- ▣ Keep mobile subscribers connected even in the most rural locations

Are you ready to quickly and cost-effectively provide reliable, high-performing mobile broadband coverage in all the places mobile users want to connect?



CellBackhaul Managed Service



Management of Satellite Components

Hub procurement and initial setup
Satellite platform and capacity



Remote Configuration & Management

Configuration in NMS
OTA software upgrades



Network Operation

Terrestrial connectivity to MNO Core
Network management and monitoring



Ongoing Service & Support

24x7 Level 1, Level 2, Level 3 support
Guaranteed service level agreements



Space Segment Setup & Management

Sizing and service provisioning
Teleport services (RF UL & DL)



Onsite Installation & Maintenance

Installation, integration, commissioning
Operation and maintenance

CellBackhaul Service Plans (Europe Only)

Plan	GB Limit	FWD MIR	RTN MIR	FWD CIR	RTN CIR	Equipment
Platinum	100	100 Mbps	20 Mbps	4 Mbps	0.8 Mbps	1.2m Antenna* 8W BUC H-Plus Modem
Gold	100	50 Mbps	10 Mbps	2 Mbps	0.4 Mbps	1.2m Antenna* 8W BUC H-Plus Modem
Silver	50	20 Mbps	5 Mbps	1.4 Mbps	0.357 Mbps	1.2m Antenna* 2W BUC H-Pico Modem
Bronze	30	10 Mbps	3 Mbps	0.7 Mbps	0.214 Mbps	1.2m Antenna* 2W BUC H-Pico Modem
Basic	10	3 Mbps	1 Mbps	0.3 Mbps	0.100 Mbps	1.2m Antenna* 2W BUC H-Pico Modem

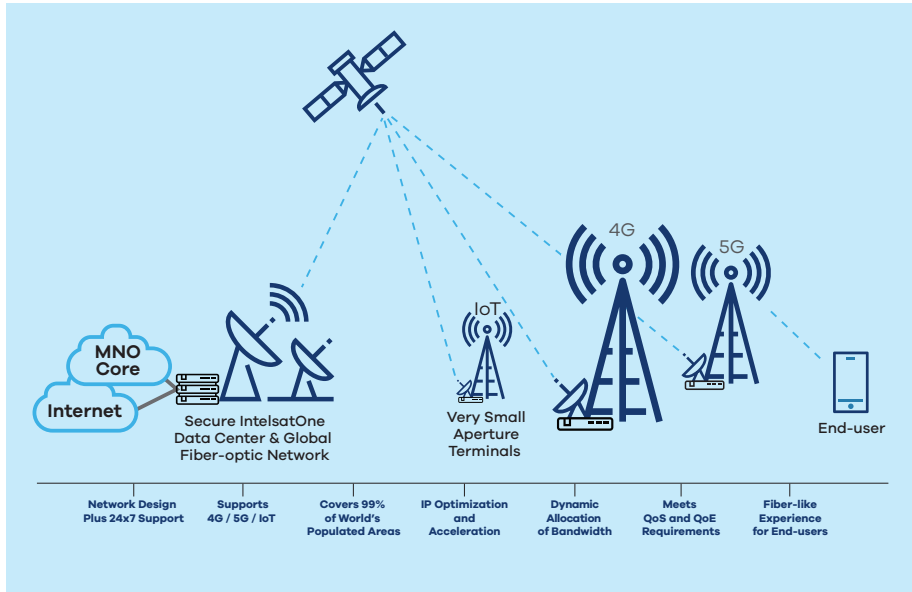
Terms: All service plans come with 1- or 3-year contracts, optional field installation, optional field maintenance.
*Can support 1m antennas or smaller based on specific network design requirements.

Advantages of CellBackhaul

- Ubiquitous coverage.** Intelsat's worldwide network provides reliable and secure high-throughput coverage across all of Europe
- Bandwidth distribution as needed.** Bandwidth is distributed to each cell site based on planned per-site demand and peak usage, with guaranteed service level agreements
- Cost-effective and time-efficient.** Smaller satellite antennas mean lower cost of physical equipment and less time installing
- High-performing QoS and QoE.** TCP acceleration, forward error correction, and caching technologies to minimise jitter and ensure fibre-like connectivity

Intelsat CellBackhaul

A complete fully managed mobile backhaul service for mobile operators



Comparison of Rural Mobile Backhaul Options

Factors	Fiber	MW	Satellite
Ubiquitous connectivity available where needed	No	No	Yes
Feasible regardless of topography or location	No	No	Yes
Quick to deploy (weeks instead of months)	No	No	Yes
Easily re-deployable to new site locations	No	No	Yes
Requires minimal investment in infrastructure	No	No	Yes
Bandwidth distributed to sites based on traffic	No	No	Yes
Optimal quality of service and experience	Yes	Yes	Yes

Are you ready to expand your network coverage beyond the limits?

Reach More. Connect more consumers, business operations and employees, and IoT devices.

Cover More. Cover more rural areas, farms, national parks, vacation spots, and roads.

Achieve More. Grow subscriber base and revenue, increase customer satisfaction, and gain competitive advantage.

About Intelsat

As the foundational architects of satellite technology, Intelsat operates the largest, most advanced satellite fleet and connectivity infrastructure in the world. We apply our unparalleled expertise and global scale to reliably and seamlessly connect people, devices and networks in even the most challenging and remote locations. Transformation happens when businesses, governments and communities build a ubiquitous connected future through Intelsat's next-generation global network and simplified managed services.

At Intelsat, we turn possibilities into reality. Imagine Here, with us, at Intelsat.com.

Contact Sales

Europe

+44 20-3036-6700

sales.europe@intelsat.com

www.intelsat.com/cellbackhaul

 intelsat.com

 [linkedin.com/company/Intelsat](https://www.linkedin.com/company/Intelsat)

 twitter.com/Intelsat

 [facebook.com/Intelsat](https://www.facebook.com/Intelsat)

 [youtube.com/user/IntelsatMedia](https://www.youtube.com/user/IntelsatMedia)

