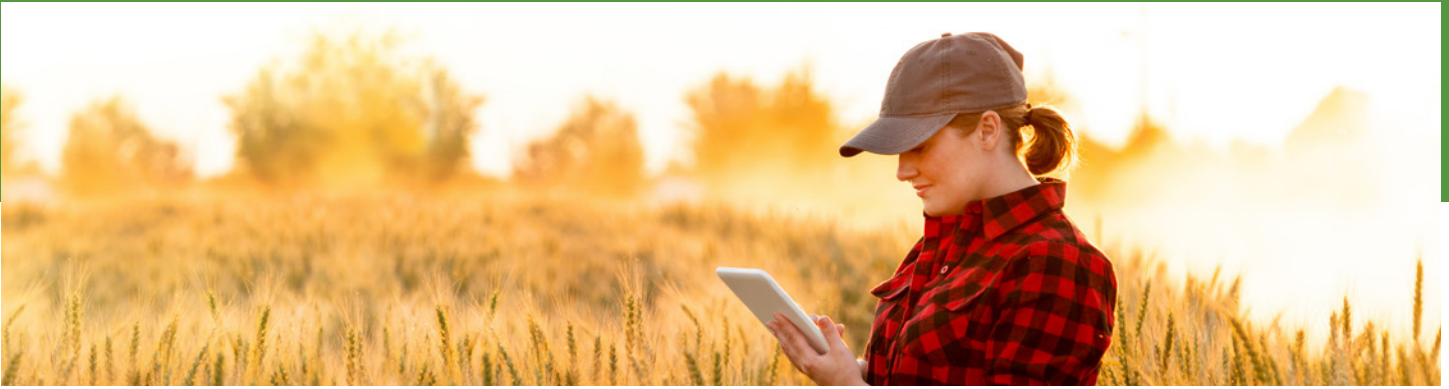


Reliable Mobile Coverage Everywhere

Connect more with satellite backhaul



There are 750 million people around the world who lack access to mobile broadband coverage, with 60% of that number living in rural and hard-to-reach areas.

Looking to grow and compete by expanding mobile coverage, or keep subscribers connected by ensuring network continuity in existing coverage areas? Here's why satellite backhaul is the ideal solution.

1

More Cost-effective Backhaul Solution for Rural Coverage

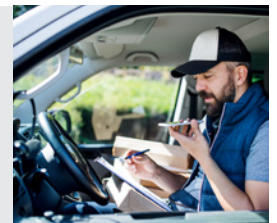
When comparing the high costs and long delays of connecting rural cell sites using terrestrial backhaul to the ubiquitous coverage and dynamic bandwidth allocation capability of satellites, using a non-terrestrial solution for backhauling rural coverage just makes sense.



2

Provides Reliable, Fiber-like Connectivity to Your Network

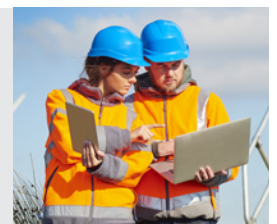
With integrated technologies to maximize data speed and minimize latency, advanced satellite technologies deliver fast, seamless connectivity. The result is optimal quality of experience (QoE) for end users.



3

Simpler to Install and Manage

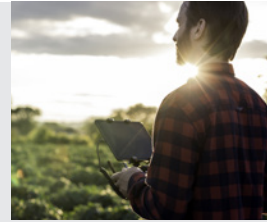
Gone are the days of clunky, complicated satellite equipment. Today, cell sites can be quickly and easily backhauled via satellite using smaller, easier-to-install antennas (75cm – 1.2m) and modems. Optional installation services are also available.



4

Supports Multiple Applications

Satellite backhaul enables mobile network operators to expand coverage (2G, 3G, 4G, 5G—even IoT) into rural and hard-to-reach places, making it a compelling option to grow a network anywhere in the world. What’s more, using satellite technologies accelerate the time it takes to get services to market by quickly backhauling new cell sites, and provides backup connectivity for existing coverage.



5

Includes Expert Support

Satellite backhaul includes network planning, design, and 24/7 network operations support by knowledgeable and experienced staff. It’s a turn-key solution designed to remove roadblocks.



Introducing Reliable, Always-on Coverage with Intelsat



Backhauling existing terrestrial networks with satellite coverage is the only way to provide reliable, resilient, premium quality of experience (QoE) connectivity for customers around the world. For over 50 years, Intelsat has used its advanced, high-throughput satellite fleet to support broadband services in multiple industries, providing the expertise, quality, and cost-effective solutions organizations need to make their network services a success.

To learn how Intelsat can help you expand your network, move into new markets, and start creating revenue, contact us today.

intelsat.com/connect-more



- intelsat.com
- linkedin.com/company/Intelsat
- twitter.com/Intelsat
- facebook.com/Intelsat
- youtube.com/user/IntelsatMedia