

# Telco Conquers Connectivity Frontier, Bringing Vital Healthcare to Alaskans

## ABOUT

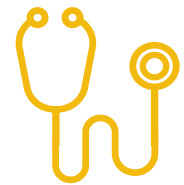
From the cities to the rugged wilderness and outlying villages that many Alaskans call home, a major Telco internet access, cable television, wireline networking and the cellular telephone services that connect these communities to the rest of the world.

Their healthcare division is devoted to connecting over 250 rural and urban health systems providing peace of mind to patients through better quality of service.

## CUSTOMER CHALLENGE

With facilities spread out over the sparsely populated state, end users were at constant risk of outages. Inclement weather and hazardous geography meant frequent repairs to damaged terrestrial infrastructure – causing potentially disastrous downtime for patients in need. (An earthquake in December 2018 left thousands without essential care.)

It was obvious they needed a more reliable solution for providers and patients – one that could guarantee uninterrupted service, no matter what.



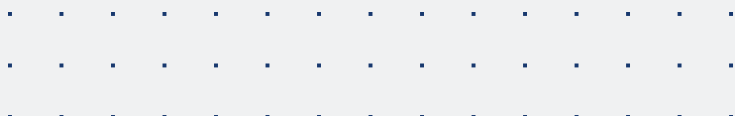
**Supply uninterrupted connectivity – no matter what.**

## HOW WE HELPED

Intelsat delivered high-throughput, uninterrupted connectivity to over 100 healthcare facilities. Single high-throughput satellite (HTS) coverage provides cost savings and simplifies the network making it possible for health practitioners to deliver the quality care their patients depend on.



**Intelsat delivered high-speed primary and back-up connectivity to over 100 healthcare facilities across Alaska.**





## RESULTS



VSAT network provided primary and backup connectivity for over 100 healthcare facilities.



Intelsat network delivered a combined 130MHz, supporting 450Mbps throughput.



Uninterrupted connectivity ensured providers could always perform critical medical procedures.



Gave Alaskans in remote areas easier, more reliable access to medical care.








Resilient satellite connectivity keeps customer networks up and running if terrestrial networks fail.



Consolidating existing backup services resulted in lower operational costs.



-  [intelsat.com](https://intelsat.com)
-  [linkedin.com/company/intelsat](https://linkedin.com/company/intelsat)
-  [twitter.com/Intelsat](https://twitter.com/Intelsat)
-  [facebook.com/Intelsat](https://facebook.com/Intelsat)
-  [instagram.com/Intelsat](https://instagram.com/Intelsat)