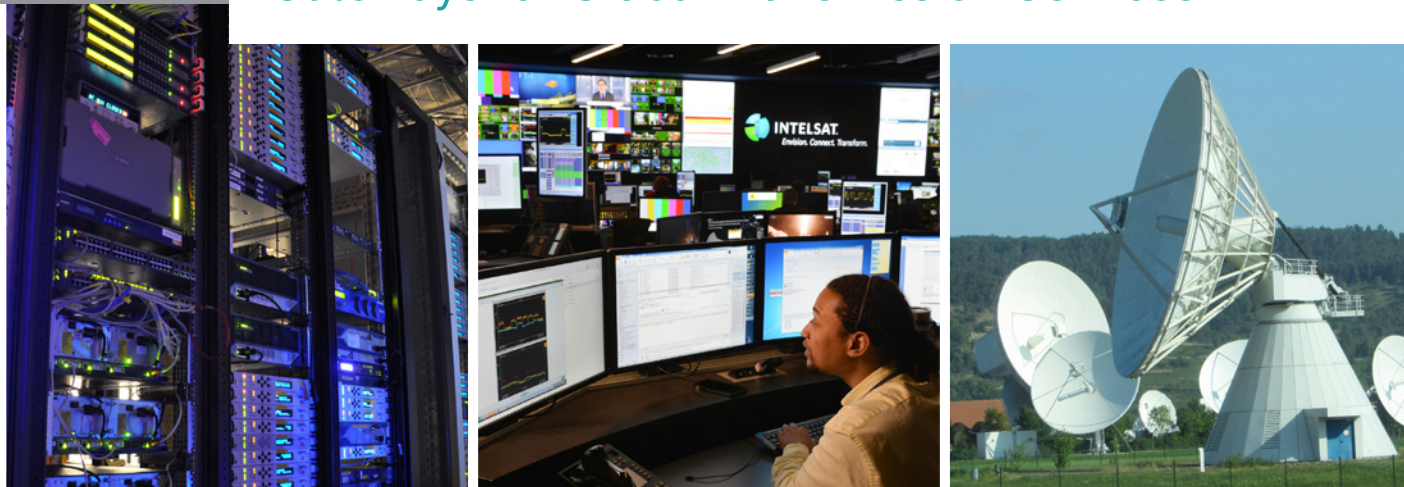


Intelsat Teleport Services

Gateways for Global Transmission Services



Access to Intelsat's global fleet is provided by a collection of teleports designed to support your applications ranging from broadband services to television programming distribution. Strategically located to connect five continents, Intelsat's teleports provide reliable and efficient access to new service regions critical to achieving your business success. Over the years, the highest profile media and enterprise companies in the world have trusted Intelsat's winning combination of satellite and ground infrastructure to deliver their entertainment and information securely and seamlessly.

The Industry Standard for Technical Expertise

Intelsat's ground infrastructure team is a diverse group of seasoned engineers and technicians. Many of Intelsat's senior-most teleport engineers have over 30 years of experience, providing technical expertise that safeguards customer traffic. Intelsat's staff are trained and have hands-on experience in the latest advances in media and network technologies. The end result is a ground infrastructure team offering unrivaled operational excellence and customer support.

One Source for Global Business Growth

Intelsat's teleports host shared and private platforms that enable your customers to enter new markets and regions quickly and cost effectively. From its experienced staff operating and monitoring the teleports 24/7, to state-of-the-art networking and video technology, Intelsat's teleports are designed to provide the infrastructure that supports your business goals.

IntelsatOne® Delivers More

The IntelsatOne terrestrial network operates seamlessly with our satellite technology to support hybrid satellite and fiber connectivity, with access to multiple platforms and teleports. Intelsat's infrastructure provides a range of managed services from teleport and hub operations to full end-to-end service. Our managed services simplify satellite-based communications, reduce network operations costs, and deliver the flexibility and support to meet your changing requirements.

ABOUT INTELSAT

Intelsat operates the world's first Globalized Network, delivering high-quality, cost-effective video and broadband services anywhere in the world. Intelsat's Globalized Network combines the world's largest satellite backbone with terrestrial infrastructure, managed services and an open, interoperable architecture to enable customers to drive revenue and reach through a new generation of network services.

Thousands of organizations serving billions of people worldwide rely on Intelsat to provide ubiquitous broadband connectivity, multi-format video broadcasting, secure satellite communications and seamless mobility services. The end result is an entirely new world, one that allows us to envision the impossible, connect without boundaries and transform the ways in which we live.



INTELSAT

Envision. Connect. Transform.

Fuchsstadt



Fuchsstadt, Germany

- Viewable Satellite Arc: 74°E – 302°E
- Over 70 antennas connecting three oceans and providing service to five continents
- Redundant fiber links to all other Intelsat commercial teleports and POPs
- Services Supported: Broadband, Media, Mobility and Satellite Operations (Primary and Backup TT&C)
- Located 80 miles (120 km) east of Frankfurt

Atlanta



Atlanta, GA

- Viewable Satellite Arc: 17°W – 151°W
- 66 antennas supporting access to AOR and CONUS satellites with connectivity to a global network of commercial teleports and fiber paths to major city POPs
- Services Supported: Media, Broadband, Mobility and Satellite Operations (TT&C)
- Located 20 miles (32 km) southeast of Atlanta

Mountainside



Mountainside - Hagerstown, MD

- Viewable Satellite Arc: 211°E – 355°E
- More than 45 antennas supporting access to the AOR and CONUS satellites
- Redundant fiber links to all other Intelsat commercial teleports and POPs
- Services Supported: Broadband, Media, Mobility and Satellite Operations (TT&C, Satellite QoS Monitoring)
- Located 70 miles (112 km) northwest of Washington

Riverside



Riverside, CA

- Viewable Satellite Arc: 170°E – 315°E
- 33 antennas supporting access to AOR, POR and CONUS satellites
- Redundant fiber links to all other Intelsat commercial teleports and POPs
- Gateway from Hollywood studios to the world
- Services Supported: Broadband, Media, Mobility and Satellite Operations (Satellite QoS Monitoring, Transfer Orbit Satellite Service)
- Located 60 miles (96 km) east of Los Angeles

Napa



Napa, CA

- Viewable Satellite Arc: 55.5°W – 166°E
- 24 antennas supporting access to POR and CONUS satellites
- Redundant fiber links to all other Intelsat commercial teleports and POPs
- Services Supported: Broadband, Media, Mobility and Satellite Operations (TT&C)
- Located 50 miles (80 km) northwest of San Francisco

Castle Rock



Castle Rock, CO

- Viewable Satellite Arc: 28°W – 180°W
- 26 antennas supporting access to and satellite Operations for POR and CONUS satellites
- Services Supported: Satellite Operations (TT&C, Satellite QoS Monitoring, In-Orbit Testing, Transfer Orbit Satellite Service)
- Located 45 miles (72 km) southeast of Denver

Fillmore



Fillmore, CA

- Viewable Satellite Arc: 47°W – 192°W
- 18 antennas delivering custom network and media services
- Services Supported: Satellite Operations (TT&C, Satellite QoS Monitoring, Transfer Orbit Satellite Service)
- Located 65 miles (90 km) northwest of Los Angeles

Paumalu



Paumalu, HI

- Viewable Satellite Arc: 127°E – 277°E
- 8 antennas supporting access to POR and CONUS satellites with co-location services for commercial and government customers serving the Pacific region
- Connected via fully redundant video fiber paths to Napa, California
- Services Supported: Satellite Operations (TT&C, Satellite QoS Monitoring)
- Located on the island of Oahu, HI

CONTACTS

Intelsat Network Operations Center

noc@intelsat.com

Intelsat Occasional Use Services

bookings@intelsat.com

www.intelsat.com

