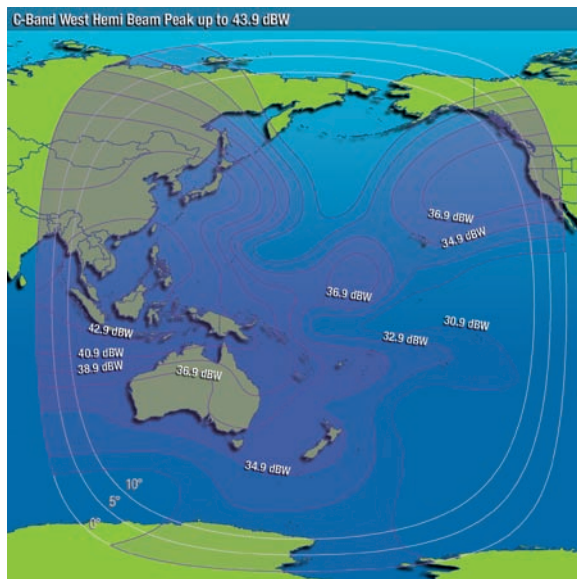


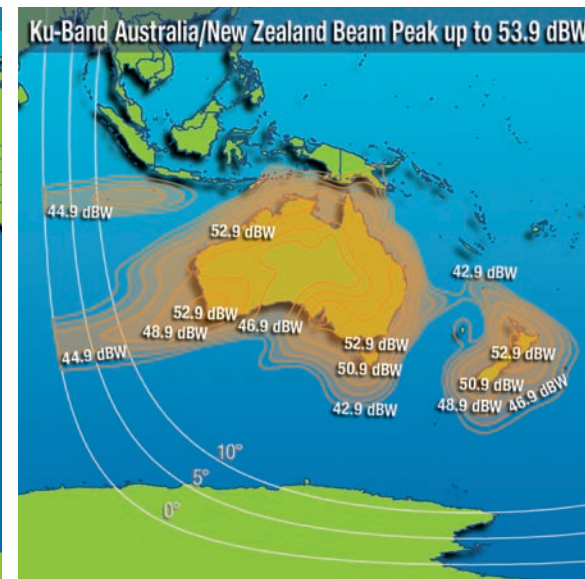
New Capacity Serving Intelsat Customers throughout Asia Pacific

The Intelsat 19 (IS-19) satellite was launched in June 2012 to start service at 166°E. The IS-19 satellite will serve network services, government and media customers throughout Asia. IS-19 will replace IS-8, which hosts one of Intelsat's premier video neighborhoods. The satellite also features beams that contribute to Intelsat's global Ku-band mobility network.

IS-19 at 166°E – C-Band*



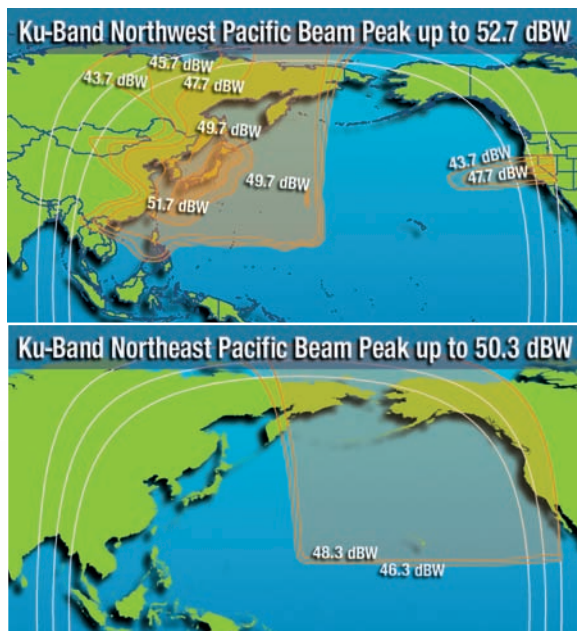
IS-19 – Ku-Band Australia/New Zealand*



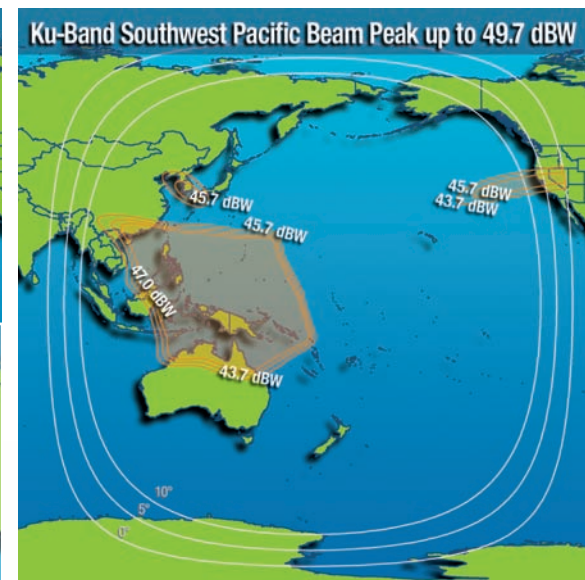
C-Band Key Parameters

- Transponders: 24 x 36 MHz
- Polarization: Linear – Horizontal or Vertical
- Downlink Frequency: 3700 to 4200 MHz
- Typical Edge of Coverage e.i.r.p.: >32.5 dBW
- Uplink Frequency: 5925 to 6425 MHz
- Typical Edge of Coverage G/T: > -9.8 dB/K
- Edge of Coverage SFD Range: -99.5 to -68.5 dBW/m²

IS-19 – Ku-Band NW/NE Pacific*



IS-19 – Ku-Band SW Pacific*



Ku-Band Key Parameters

- Transponders: 34 x 36 MHz
- Polarization: Linear – Horizontal or Vertical
- Downlink Frequency: 12.25 to 12.75 GHz
- Typical Edge of Coverage e.i.r.p.:
 - Australia/NZ: >44.0 dBW
 - NW Pacific: >46.1 dBW
 - NE Pacific: >47.4 dBW
 - SW Pacific: >45.5 dBW
- Uplink Frequency: 14.0 to 14.50 GHz
- Typical Edge of Coverage G/T:
 - Australia/NZ: >-2.7 dB/K
 - NW Pacific: >+0.1 dB/K
 - NE Pacific: >+0.7 dB/K
 - SW Pacific: >-1.0 dB/K
- Edge of Coverage SFD Range:
 - Australia/NZ: -103.0 to -66.0 dBW/m²
 - NW Pacific: -102.5 to -65.5 dBW/m²
 - NE Pacific: -102.5 to -65.5 dBW/m²
 - SW Pacific: -104.0 to -67.0 dBW/m²

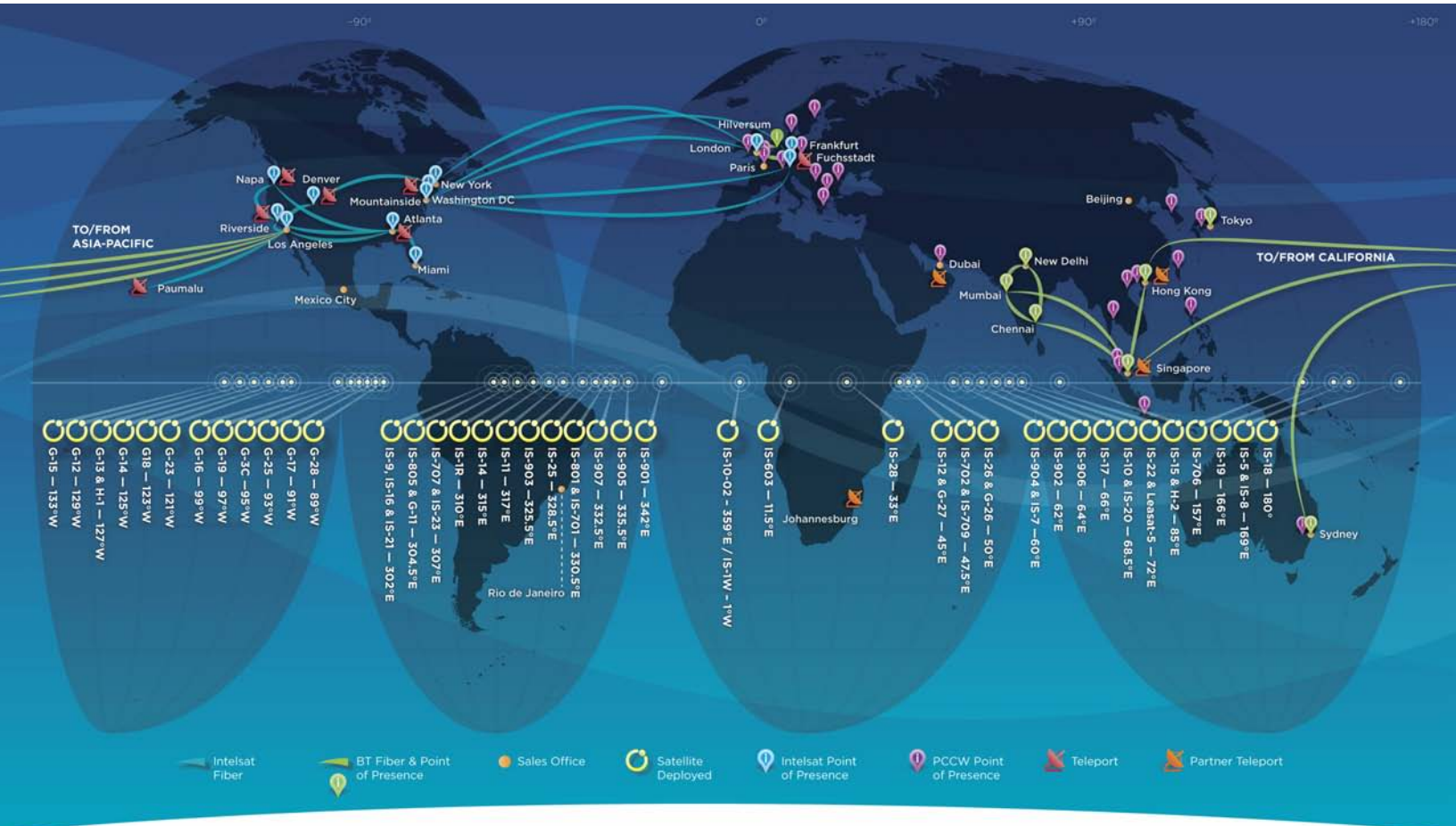
*This is a future spacecraft deployment. All payload performance values are preliminary.



INTELSAT

Closer, by far

Intelsat Global Infrastructure



About Intelsat

Intelsat is the leading provider of satellite services worldwide. For over 45 years, Intelsat has been delivering information and entertainment for many of the world's leading media and network companies, multinational corporations, Internet service providers and governmental agencies. Intelsat's satellite, teleport and fiber infrastructure is unmatched in the industry, setting the standard for transmissions of video, data and voice services. From the globalization of content and the proliferation of HD, to the expansion of cellular networks and broadband access, with Intelsat, advanced communications anywhere in the world are closer, by far.

SALES CONTACTS

Africa

+27 11-535-4700
sales.africa@intelsat.com

Asia-Pacific

+65 6572-5450
sales.asiapacific@intelsat.com

Europe & Middle East

+44 20-3036-6700
sales.eme@intelsat.com

Latin America & Caribbean

+1 305-445-5536
sales.lac@intelsat.com

North America

+1 202-944-7546
sales.na@intelsat.com

www.intelsat.com